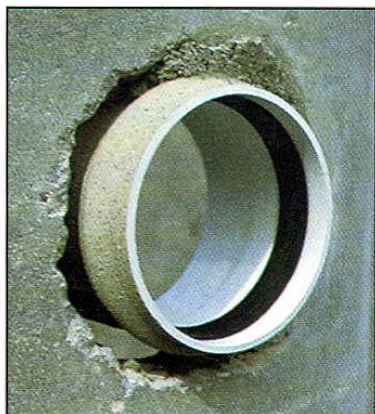
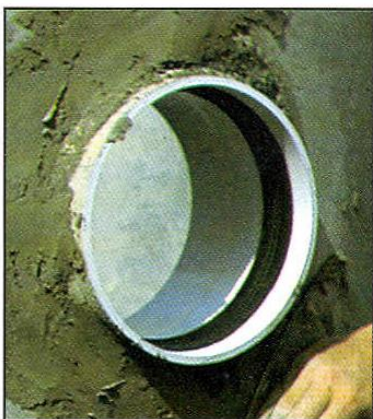




GPK Sanded Manhole Adapter Install

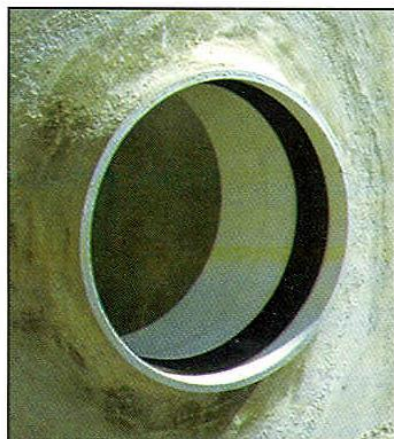


1. Core or knock out hole approximately 1+ inch larger than outside diameter of sanded manhole. Allow enough space around adapter for grout to get into.



2. Dry fit manhole adapter in hole to insure placements and orientation
3. Center adapter in opening. Hold Manhole in place with grout and adjust for orientation.

keep gasket and inside of adapter clean



4. Secure manhole with non-shrink grout. Make sure to fill all the void around the manhole to insure a watertight fit.
5. Allow grout to fully cure prior to installing pipe into adapter.

